



GISCON

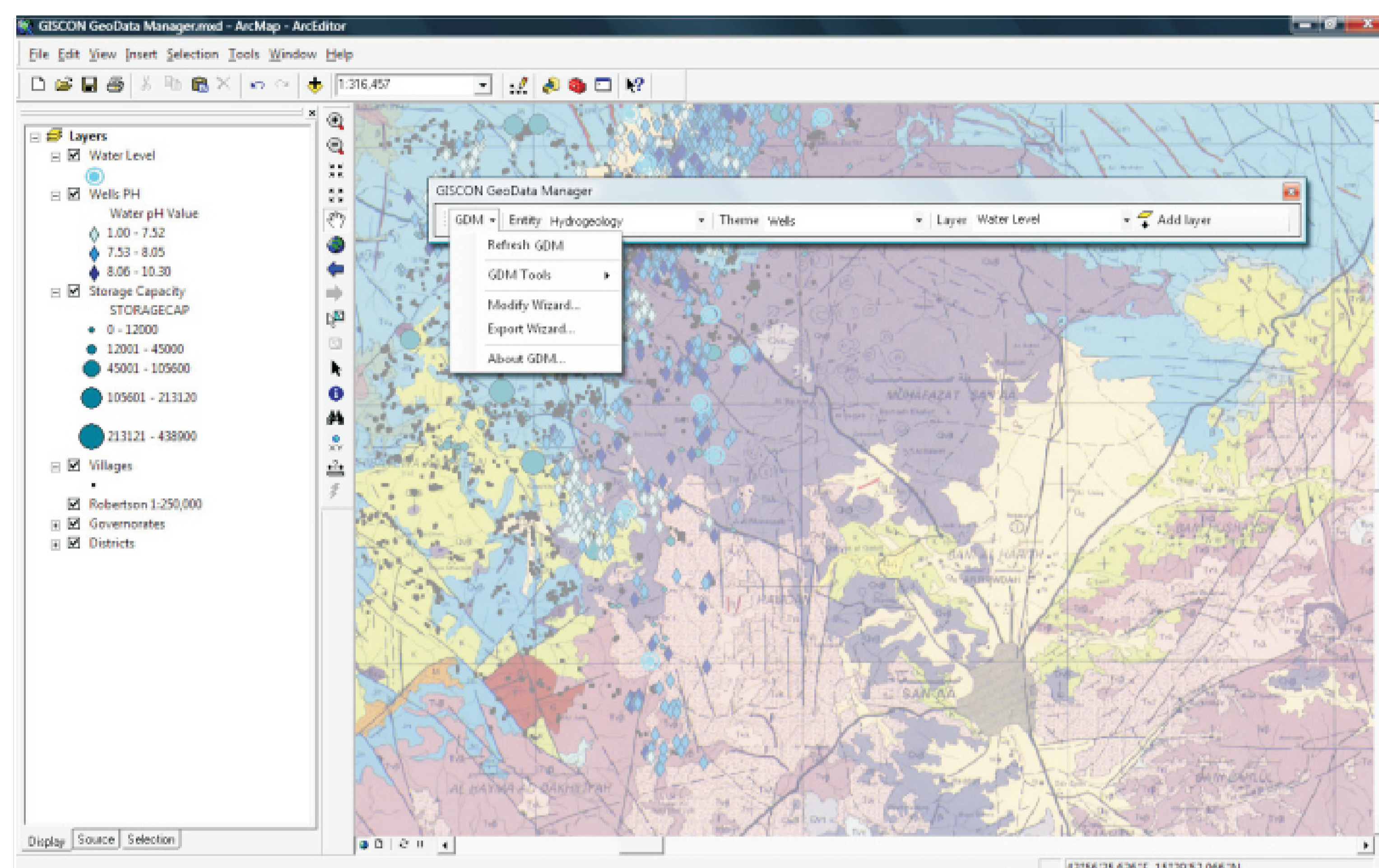
GDM

GISCON Geo-Data Manager

for ArcGIS®

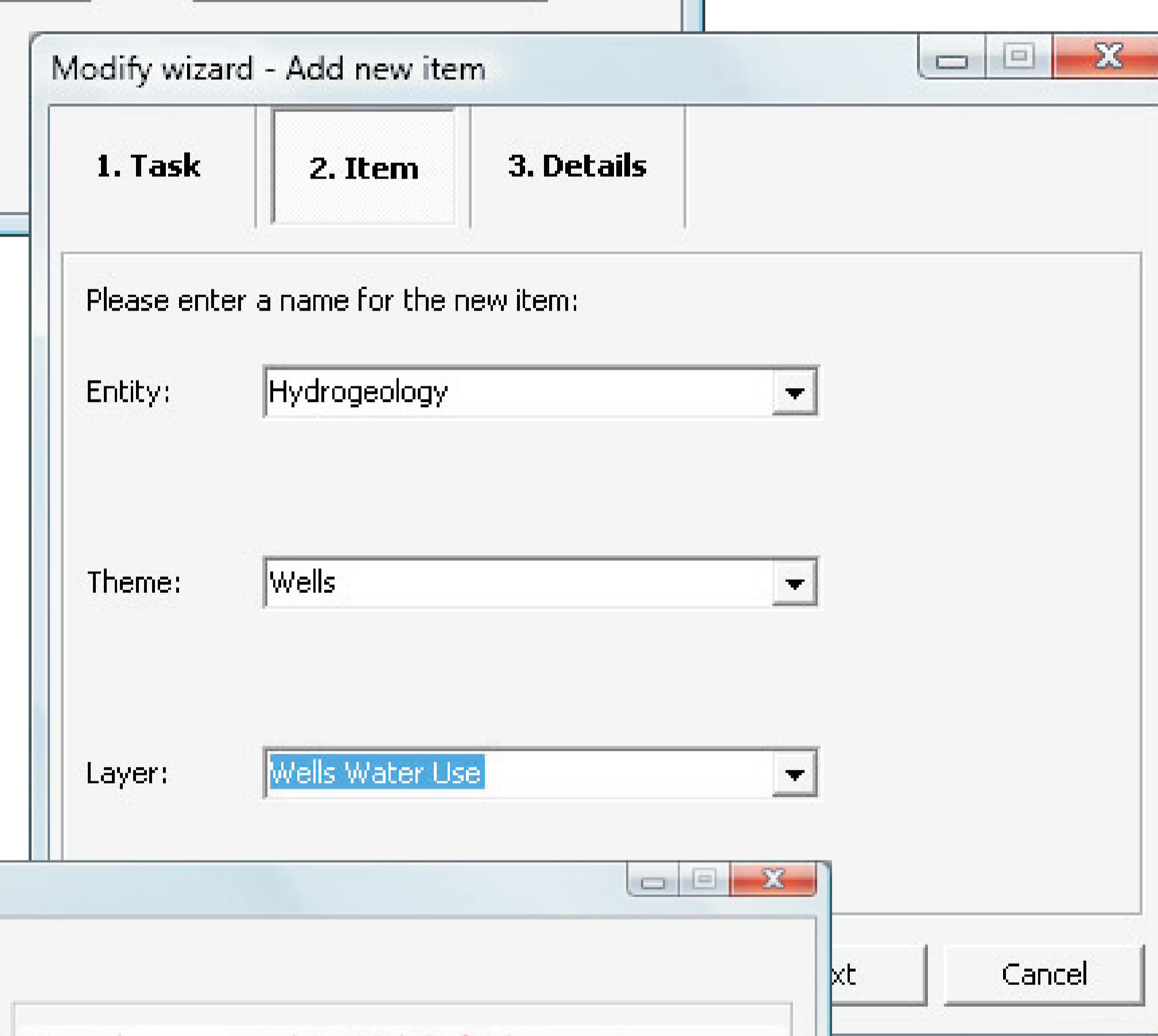
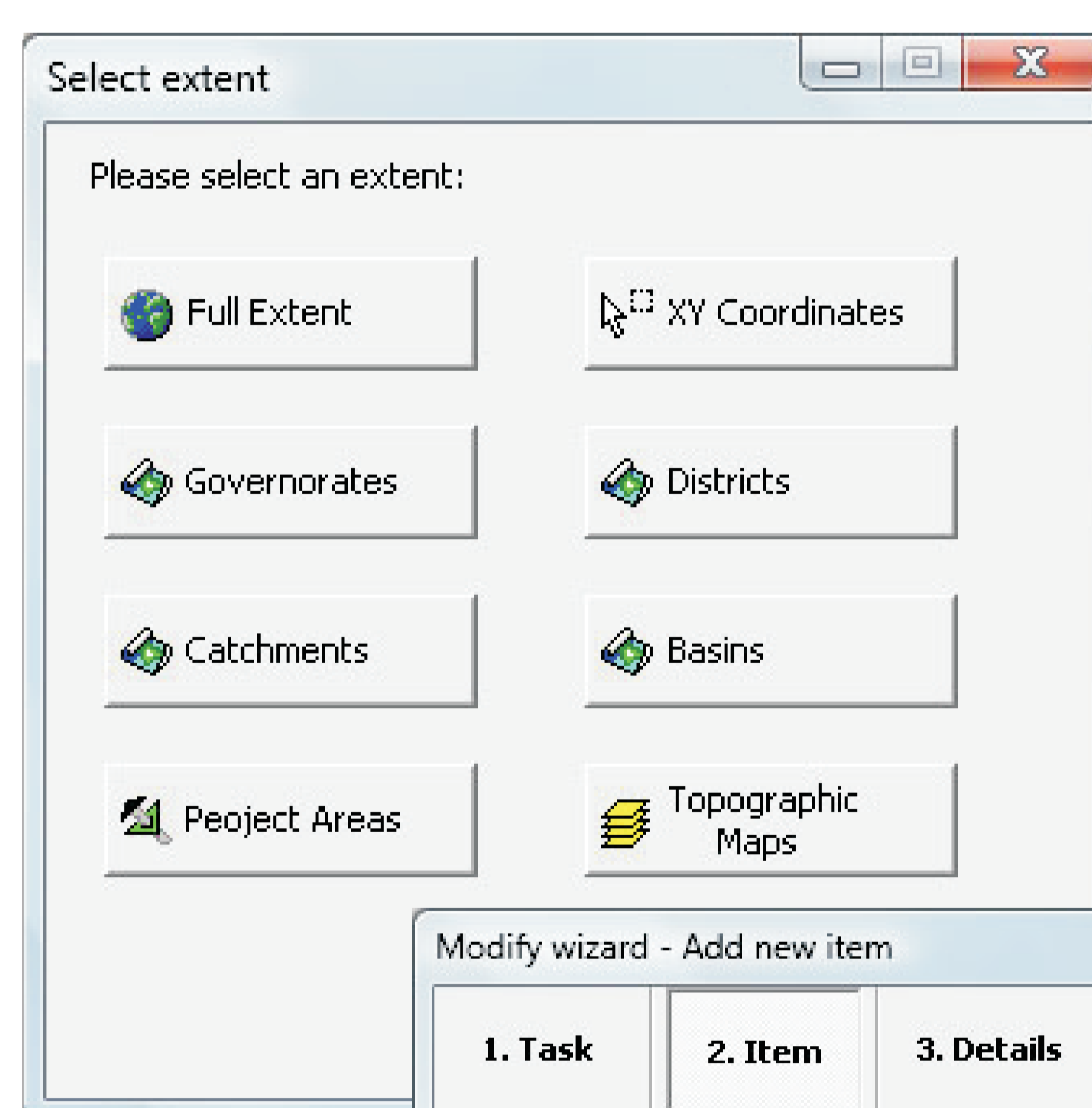
The management and manipulation of large spatial datasets requires a complex database structure.

Datasets organized from different data sources in different formats and coordinate systems, should be integrated and presented to the user in a simple and clear manner. This is the main task of GISCON Geo-Data Manager (GDM) for ArcGIS®.



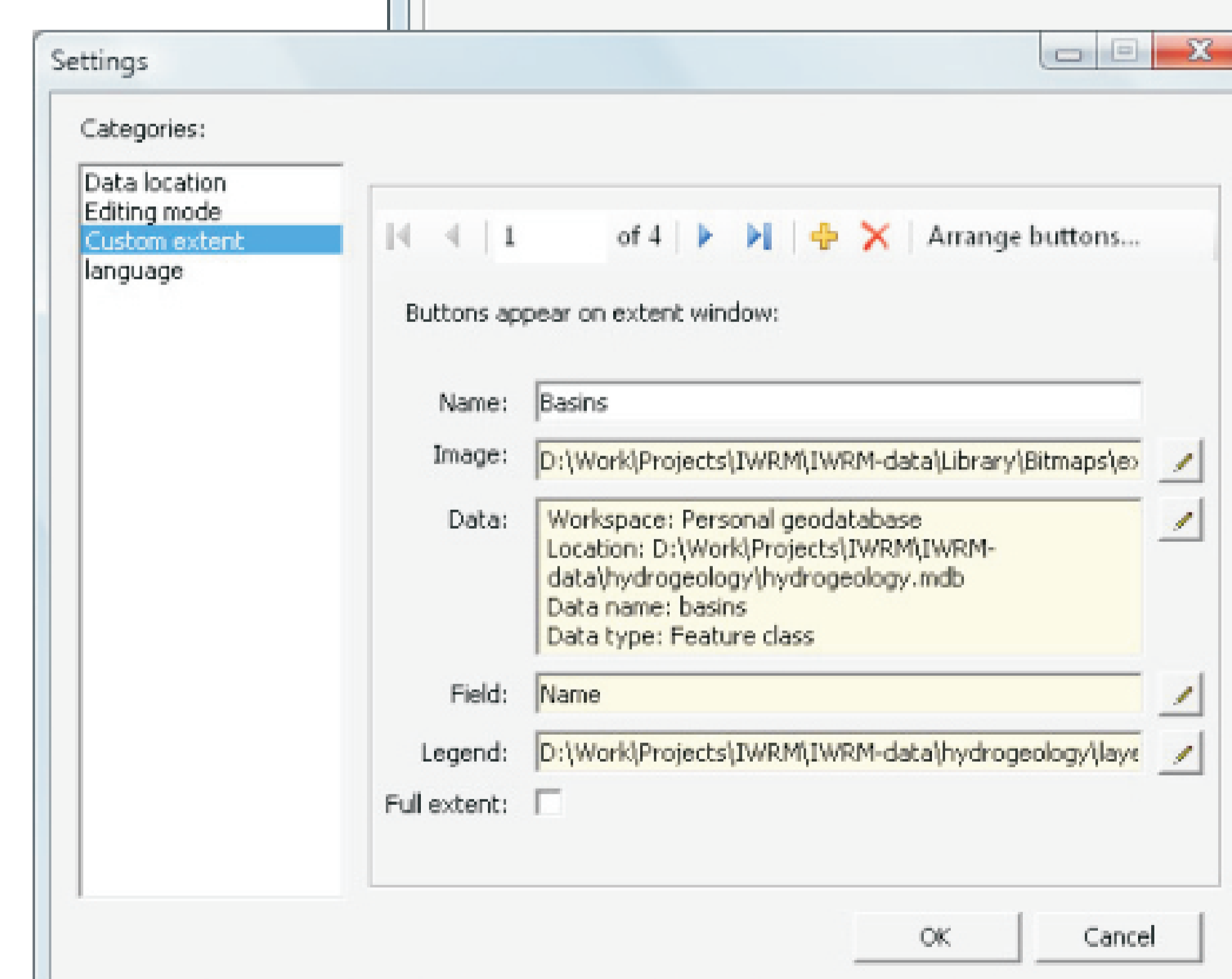
Structured management of the following formats:

- ArcSDE® Geodatabase
- Personal / File Geodatabase
- Shapefile
- Coverage
- ArcSDE® Raster Data
- Raster Images
- GRID



Key Features

- Administration of geo-datasets that are centrally (server) or locally (client) stored.
- Three levels of thematic data organization in familiar names and common symbols.
- Management of raster datasets.
- Automatic display of Raster Catalogs.
- Assistant-Wizards for selective import and export of spatial and attribute data.
- Thematic zooming levels.



GISCON Solutions

GISCON Solutions

Mr. Ahmed Talaat, MSc.

Danziger Strasse 31 A • 59174 Kamen • Germany

Tel.: +49 2307 970 790 • Fax: +49 2307 970 791

E-Mail: ahmed.talaat@giscon.de